

PARENT INFORMATION BOOKLET

A-Z



Address: 8 Glen Street, BELROSE NSW 2085 **Phone:** 02 9451 1812

Email: wakehurst-p.school@det.nsw.edu.au

Web: wakehurst-p.schools.nsw.gov.au/

Welcome

Dear Families,

At Wakehurst Public School we equip students with the tools to be successful, confident and creative individuals. This is achieved through quality teaching and learning programs that set high student expectations and inspire our students to be their best in a complex and dynamic society. We also offer a wide range of curricular and extra-curricular opportunities in sport, choir, dance, drama, debating, robotics, student leadership and environmental education.

Our spacious playground and play equipment offer space and opportunity for children to enjoy the outdoors through play and our environmental programs. We also run a 'green team' program in our vegetable gardens where students can plant and harvest their own produce.

Our commitment is to continue to develop quality learning environments across our school. Our teacher professional learning targets key areas such as literacy, numeracy, technology and student wellbeing.

Our students are supported by effective wellbeing practices based on the principles of Positive Behaviour for Learning. We model and teach our school expectations of respect, responsibility and personal best and we have a focus on further strengthening resilience practices through the 'Resilience Project'.

Our fully air-conditioned learning spaces have been designed to create student-centred and future focused learning environments. Students work towards their individual learning goals, and receive timely feedback to further develop. Our Bring Your Own Device program in years 4-6 has been successfully implemented to support student learning.

Please don't hesitate to contact the school for further information.



Caroline Desmond
PRINCIPAL

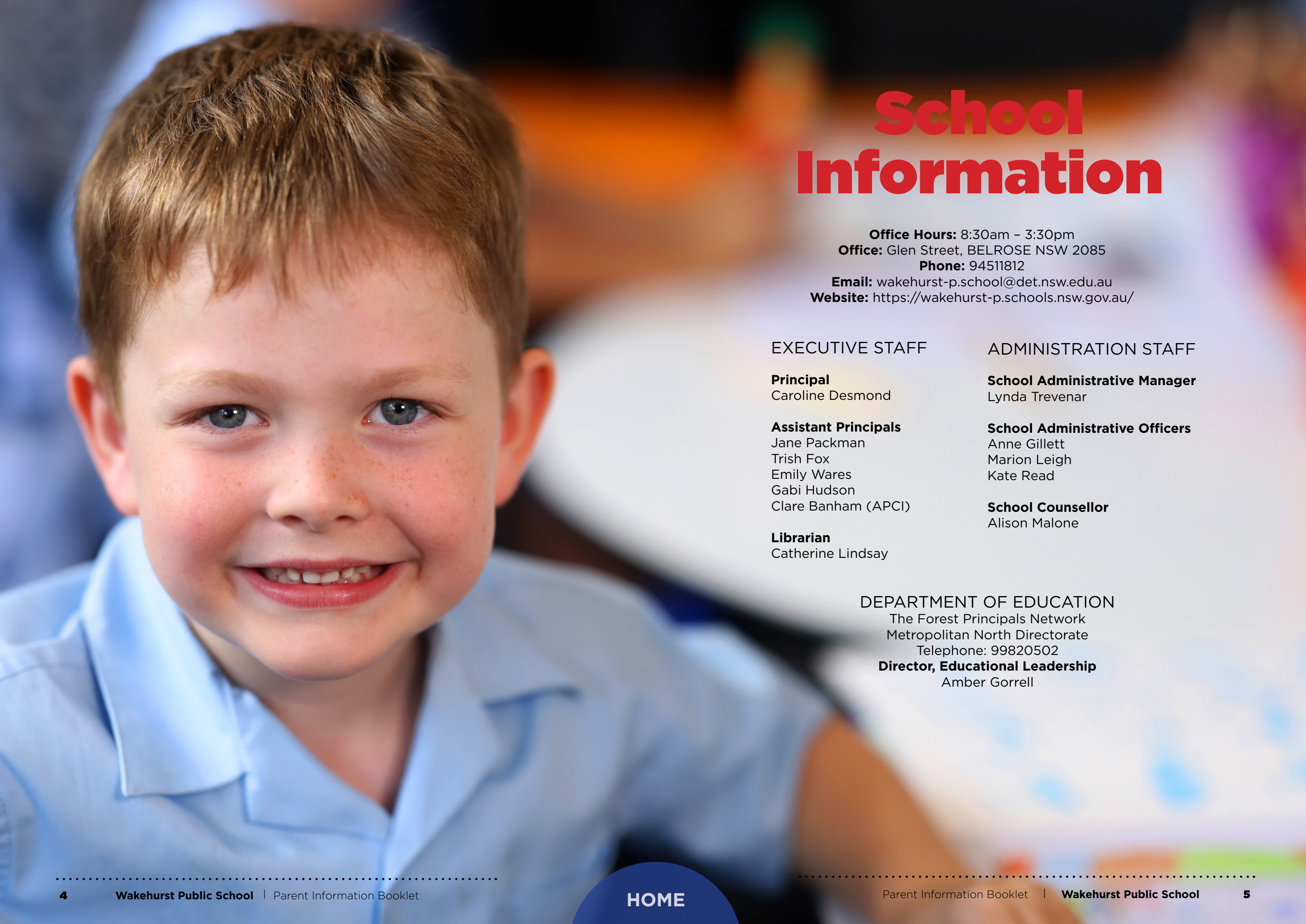


Our Vision

At Wakehurst Public School our teachers, parents and students work in partnership to maintain high expectations with a focus on student achievement and wellbeing.

We support our students through a quality learning environment where every student is known, valued and cared for.

We will continue to work collaboratively to equip our students with the tools to become successful, confident and creative individuals.



School Information

Office Hours: 8:30am – 3:30pm
Office: Glen Street, BELROSE NSW 2085
Phone: 94511812
Email: wakehurst-p.school@det.nsw.edu.au
Website: <https://wakehurst-p.schools.nsw.gov.au/>

EXECUTIVE STAFF

Principal
Caroline Desmond

Assistant Principals
Jane Packman
Trish Fox
Emily Wares
Gabi Hudson
Clare Banham (APCI)

Librarian
Catherine Lindsay

ADMINISTRATION STAFF

School Administrative Manager
Lynda Trevenar

School Administrative Officers
Anne Gillett
Marion Leigh
Kate Read

School Counsellor
Alison Malone

DEPARTMENT OF EDUCATION
The Forest Principals Network
Metropolitan North Directorate
Telephone: 99820502
Director, Educational Leadership
Amber Gorrell

Quick links:



Communication



Curriculum



Enrichment



Finance



Health and welfare



Learning opportunities



Parent involvement



Technology



Transport



Uniform

A

Accidents and Sudden Illness	16
Anaphylaxis	16
Assemblies	8
Asthma & Other Chronic Illnesses	16
Attendance	12

B

Bell Times	9
Buddies	19
Bus Information	36

C

Canteen	12
Changes to Routine	12
Communication	14
Curriculum	10

D, E

Departure	8
Excursions	20
Emergency Evacuation	12
English as an Additional Language or Dialect (EAL/D)	20

F, G, H, I

Family Court	20
Family Holidays	20
General Information	5
Health	16
Home/School Communication	14
HPGE	23
Immunisation	16
Infections and Contagious Illnesses	17

L

Learning Support Team	11
Leaving School Grounds during school hours	21
Library	24
Lines	24

M, N

Medications at school	17
-----------------------	----

O, P

Outside School Hours Care	30
Opportunity Classes	24
Parents and Citizens (P&C)	25
Parents as Helpers	25
Pedestrian Crossing Supervisor	30
Playgrounds	30
Positive Behaviour for Learning	15

R

Reporting to Parents	14
Resilience Project	15
Road Safety	36

S

School Accounts	18
School Song	42
School Map	28
Selective High School Tests	31
Special Religious Education/ Ethics	32
Sport	29
Sport Houses	13
Student Representative Council	29
Swim School	32

T, U, V

Travel To and From School	38
Uniform	40
Visiting Performances	34
Visitor check in	35

W

Welcome	2
Wellbeing	15

**ACCESS TO SCHOOL
GROUNDS**

There are four pedestrian access points to the school – two on Glen Street, one from Hawea Place and one from Wanaka Place. Parents collecting children in cars are encouraged to use the nearby roads and escort children back to their car. Please do not park in any driveways or car parks. Car parks are not for pedestrian use.

AFTERNOON DISMISSAL

The staff are conscious of the safety of our students when leaving school to go home. Students who attend the Wakehurst OOSH centre are collected outside their rooms. Years 1-6 students make their own way to the Centre.

Students who remain after school for rehearsals, tuition or training are the responsibility of the person or group organising the activity - not the

responsibility of the school unless it is an activity organised by the school.

Children being picked up after school must be picked up promptly at 3:15pm. Students must be supervised by the parent/carer after 3:15pm and are not permitted to remain unsupervised to wait for an afternoon tutorial or lesson.

Any student that is not picked up will be sent to the office and parents will be called. Year K - 2 children who are not collected on time will be taken to the Office. Any Year 3 to 6 students who are not collected on time, should go to the Office. Office staff will contact the parent/emergency contact. Please advise the school if your child has a change in the method of departure from school.

ASSEMBLIES

Assemblies are held fortnightly in even weeks in our school hall.
K to 2 - 11.40am
3-6 - 1.50pm

Bell times

Classes begin	9:15am
Recess	11:15am to 11:40am
Lunch	1:00pm to 1:50pm
Classes end	3:15pm

The playground is NOT supervised before 8:45am or after 3:15pm. Students are NOT to arrive before 8:45am.



The NSW Australian Curriculum

KEY LEARNING AREAS

THE PRIMARY CURRICULUM IS MADE UP OF SIX KEY LEARNING AREAS (KLAs):

- English: including Reading & Viewing, Speaking & Listening and Writing & Representing.
- Mathematics: Measurement and Space, Number and Algebra and Statistics and Probability
- Creative Arts: Music, Visual Arts, Drama and Dance
- History/Geography

- Physical Education, Personal Development and Health
- Science and Technology

There is an overlap between many of the KLAs and the school recognises that it is in the students' best interest to integrate the various aspects of the curriculum so that they become inseparable parts of a meaningful and enjoyable primary education.



Learning Support Team

The role of the Learning Support Team is to provide for the learning needs and welfare of all students at Wakehurst Public School. The Learning Support Team meets weekly to discuss teacher and parent/carer referrals and to follow up on students referred during the year. The team discusses the referrals with a view to implementing one or more of the following strategies:

- refer to the School Counsellor
- apply for funding to support the student through the use of a Student Learning Support Officer (SLSO).

- assistance with developing Personalised Learning and Support Plans for students
- help implement programs to support students' needs
- organise for students to receive extra support from specialist staff within the school
- seek external help to support student and family

Special Programs

Programs are in place to ensure that students with special requirements are provided with the additional support that will enable them to reach their full potential. This includes children for whom English is an Additional Language Dialect (EAL/D) and children with learning disabilities who are supported by the MacqLit, MultiLit and MiniLit Sage programs.

Parents who are concerned about their child's progress or adjustment are encouraged to discuss their concerns with the class teacher.



ATTENDANCE

Students are required to attend school on each day instruction is provided. It is the responsibility of parents/carers to ensure regular attendance. Attendance is essential to ensure progress.

Notification of a child’s absence can be made via SchoolBytes. Please report student absences prior to 9:15am. The school is required to maintain daily records of attendance, including partial attendance and late arrival. Parents/carers must send a note explaining any absence or partial absence.

The school must be informed if the student is to be absent for an extended period of 6 school days or more. An application for Extended Leave must be completed in advance and must include travel documentation. The school is responsible for monitoring student attendance and will inform parents/ carers promptly of any case of concern or of any unexplained absences. If you experience trouble with getting your child to school, please come talk to us and we can set up a support system for you.

CHANGES TO ROUTINE

Teachers should be advised in writing of any change to a student’s routine (eg. a change in after-school arrangements). This information must be given to the teacher before the change of routine so as to ensure

the safety of the student. Messages telephoned to the school office will only be passed on in emergency situations.

CLOTHING/ PERSONAL BELONGINGS

Please mark all clothing and personal belongings clearly with your child’s full name: jumpers, jackets and hats, both shoes and socks and all removable clothing, drink bottles etc.

CANTEEN

The canteen is operated by our P&C by a paid canteen manager. Parents are invited to volunteer to assist in the day to day running of the service. The canteen menu has been designed with healthy eating considerations in mind. All canteen food can be pre-ordered using the Flexi-schools ordering system.



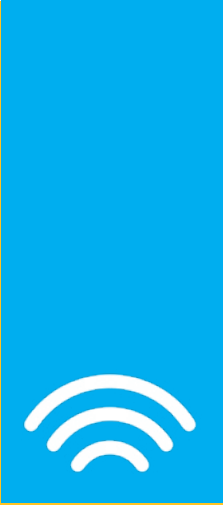
EMERGENCY EVACUATIONS

The school has an emergency evacuation procedure to deal with a variety of situations. The students and staff practise this procedure at regular intervals during the year. All visitors (including parents/ carers) must comply with emergency procedures and instructions from staff in the event of an evacuation drill and any emergency.

Sports Houses

Children in Years K-6 are allocated to one of FOUR sporting houses:

Kookaburra	Blue
Rosella	Red
Kingfisher	Yellow
Lorikeet	Green



Communication

PARENTS HAVE A NUMBER OF AVENUES TO CHOOSE FROM

HOME/SCHOOL COMMUNICATION

Our school policy is to ensure on-going communication between school and home. Changes or variations to procedures or routine are always well publicised. The school publishes a fortnightly newsletter, via SchoolBytes and on our website.

COMMUNICATION

Effective communication between teachers and parents/carers is vital to ensure the best learning environment for each student. If you would like to discuss an issue regarding your child's progress, please contact the school by email or phone to arrange an interview with your child's teacher. The school communicates with parents/carers through a variety of processes.

These include:

Whole School Communication

- SchoolBytes messaging
- Newsletter (Fortnight Publication)
- School Website
- School Facebook page

P&C Communication

- P&C Meetings
- P&C Facebook Page

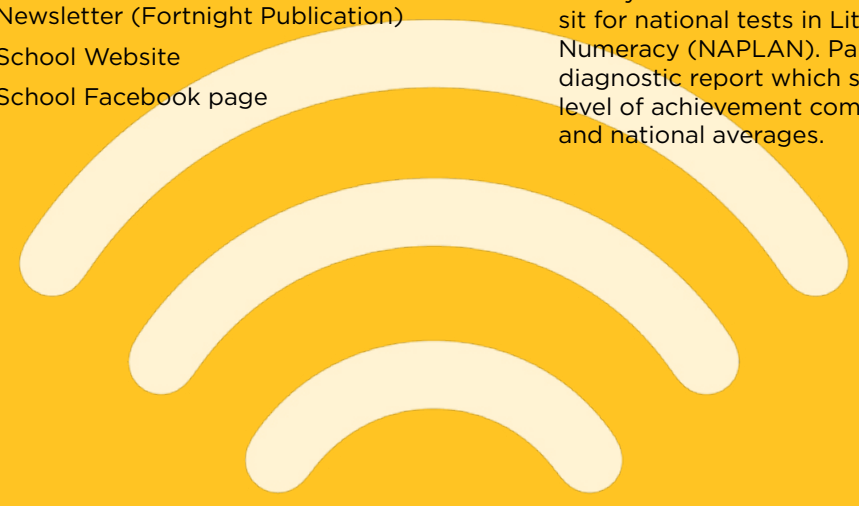
Classroom Communication:

- SchoolBytes
- Call the Office between 8:30am - 3:30pm
- Face to face with your class teacher
- Meet the Teacher Evenings at the start of each year
- Annual Parent/Teacher interviews

REPORTING TO PARENTS

Parents are provided with reports on their child's progress at the end of each semester. Reports are designed to indicate the student's level of mastery and degree of application and to provide students with learning goals to continue to develop their skills.

Each year students in Years 3 and 5 sit for national tests in Literacy and Numeracy (NAPLAN). Parents receive a diagnostic report which shows the child's level of achievement compared to school and national averages.



Wellbeing

POSITIVE BEHAVIOUR FOR LEARNING (PBL)

At Wakehurst Public School our school expectations are the cornerstone of the PBL system. We aim to build a safe, positive and productive learning environments through the teaching of our clear and consistent expectations across our school. Our expectations are:

- Respect
- Responsibility
- Personal Best

The systems have been designed to support student learning across our learning environments, and to provide individual behaviour supports to achieve positive academic and social outcomes for students. Our merit system includes Wakehurst Wise Awards and recognises wise behaviour choices through bronze, silver, gold and platinum awards. Our mascot, 'Winter the Wise Owl' is visible on all school signage and was named by our students.

All staff are responsible for teaching our behavioural expectations, providing

consistent positive feedback to students, and delivering consistent corrective feedback and consequences to develop self-regulation strategies.

THE RESILIENCE PROJECT (TRP)

Wakehurst Public School has partnered with the Resilience Project over recent years to support mental health in the classroom, staffroom and family home.

The Resilience Project delivers emotionally engaging programs to schools providing practical, evidence-based mental health strategies to build resilience and happiness. Through presentations, school curriculum, events, the TRP App, and Wellbeing Journals, we share the benefits of Gratitude, Empathy and Mindfulness, and easy ways to practise these in everyday life. Students work through The Resilience Project lessons with their classroom teacher, by completing activities and recording their thoughts and responses in their journal.



Health

STUDENT HEALTH AND WELFARE

ACCIDENTS AND SUDDEN ILLNESS

In the case of a sudden illness or an accident, every attempt will be made to contact the parents or an emergency contact person. If this is not possible or the emergency is extreme, appropriate medical treatment will be sought.

Please inform the office staff of any changes to your contact details, especially the emergency contact telephone numbers, for your child's student information online.

School staff are trained in emergency response procedures.

ALLERGIES

Regulations require specific paperwork to be completed by your child's doctor if your child has anaphylaxis, asthma or allergies. The office staff will provide this paperwork that **MUST BE SIGNED BY A DOCTOR**. We appreciate your support in this matter.

ANAPHYLAXIS

On occasions people in the community have a severe and life threatening reaction to an ingested product. This is known as Anaphylaxis. Such reactions require use of an EpiPen in an emergency. For this reason we ask that no food products are shared at school. We do not share birthday cakes or lollies.

If you have a child with a life threatening allergy, which may require emergency intervention or the use of an EpiPen, we ask that you make this known to

us before the start of the school year. We will also require an Emergency Action Plan completed by your General Practitioner and any medication for use during an Anaphylactic reaction. School staff are trained in the care of anaphylactic students including the use of EpiPens.

The consumption of nuts and nut by-products is discouraged at our school.

ASTHMA & OTHER CHRONIC ILLNESSES

Some students require specific support in a health emergency such as an asthma attack. Please supply the school office with a Medical Action Plan, including a photograph of your child and all procedures and medication to be used if your child should require this intervention.

IMMUNISATION

When enrolling a child, parents/carers will be asked to provide an Immunisation History Statement. Parents can request an Immunisation History Statement by contacting the Australian Immunisation Register on 1800 653 809.

A child without an Immunisation History Statement will not be prevented from enrolling in primary school. Under the NSW Public Health Act 2010, children without proof of immunisation may be asked by Public Health Officials to stay at home during an outbreak of vaccine preventable disease.

INFECTIONS AND CONTAGIOUS ILLNESSES

There are some childhood illnesses which may cause a child to be excluded from school. If your child has contracted one of these illnesses, please contact the school immediately so that we can keep you informed of relevant Health Department regulations. Illnesses include: whooping cough (pertussis), chickenpox, German measles (rubella), measles, mumps, viral hepatitis, ringworm, scabies, impetigo and conjunctivitis.

MEDICATIONS AT SCHOOL

Parents/carers of students with conditions that require regular medication must ensure that the school is aware of the student's condition. The school must be informed if medications are brought to school. All medications are to be handed in at the school office by an adult. No medications are to be kept in school bags or uniform pockets. Parents/carers should timetable medication dosages out of school hours if possible. However, if it is necessary for prescribed medication to be taken during school hours, parents/carers must complete a form giving permission for administration staff to supervise the administration of the medication. The form must include specific instructions. If your child has a diagnosed medical condition (anaphylaxis or asthma), a doctor's action plan must be provided to the school.





Finance

SCHOOL FEES AND MORE

SCHOOL ACCOUNTS

School Accounts are sent out at the beginning of each term. These fees cover the workbooks and curriculum materials specifically designed by the school to supplement student learning.

Excursions are billed to families as they arise.

Families may wish to make a voluntary contribution to the P&C to cover ground maintenance and support of specific teaching and learning initiatives available at our school.



Buddies & Big School

TRANSITION TO 'BIG SCHOOL'

At Wakehurst Public School the transition to 'big school' is made easier with a buddy system'.

Each Kindergarten student is allocated a Year 6 buddy who support the Kindergarten student in the first few weeks of school by sitting with them at recess and lunch, playing with them in the playground and sharing a friendly smile in the school grounds.

K-6 BUDDY PROGRAM

All Kindergarten to Year 6 classes come together throughout the year for planned opportunities to share some learning time together including buddy reading and classroom visits for special occasions.



ENGLISH AS AN ADDITION LANGUAGE OR DIALECT (EAL/D)

The school has specialist teachers who support the English language development of students, whose first language is not English. Students eligible for EAL/D support range from students newly arrived in Australia, who are beginning to learn English, to Australian-born students from a non-English speaking background (NESB). These students may require further development of their English language skills and on-going English language support. The EAL/D teacher works with class teachers and withdraws small groups of students who require intensive assistance.

EXCURSIONS

Excursions are an integral part of the school's curriculum and provide an enrichment of each student's educational program.

The school is aware of the imposition that excursions can make on a family budget and economic factors are taken into account in planning excursions. Ample notice is given of excursions which involve out of the ordinary expense.

FAMILY COURT

The school provides information to both parents/carers unless a contrary order from the Family Court or the police is provided to the school. Permission to participate in school excursions and activities is sought from the parent/carer with whom the student resides. Changes to existing arrangements can only be made following the presentation of a new order from the Family Court or police.

FAMILY HOLIDAYS

Only in extraordinary circumstances should holidays be arranged during school terms. As directed by the Department of Education: 'As part of the implementation of the National

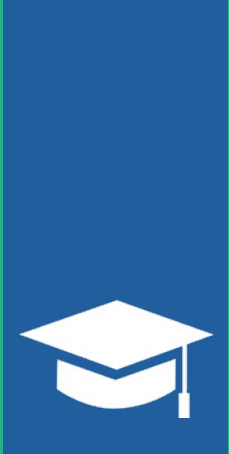
Standards, holidays taken by students outside of school vacation periods will now be included as absences.

HOMEWORK

The school community supports homework. Homework provides students with an opportunity to consolidate their classroom learning experiences and to develop essential home study skills. Homework is provided for every grade in the school in accordance with the school's Homework Policy. While homework is set on most occasions, there will be times when it is not set. This does not mean that there is no homework; reading, practising skills and completing unfinished work are activities that are always available.

LEAVING SCHOOL GROUNDS DURING SCHOOL HOURS

Students are not permitted to leave the school grounds during school hours unless they have parent/carer permission and are accompanied by an adult. Parents are requested to go to the front office to be given the early leavers form and take it to the classroom prior to collecting their child. This procedure ensures students' safety and avoids unnecessary disturbances to class routines. If an adult, other than the parent/carer, is to collect a student, the parents/carers must verify the identity of that person with the school before the student departs the school. Where possible, parents/carers are requested to avoid making medical and dental appointments during school hours, to assist with continuity of the learning program.



HIGH POTENTIAL & GIFTED EDUCATION

All NSW schools have a commitment to ensuring that high potential and gifted students are engaged and challenged in their learning. High potential or gifted students have advanced learning capacity compared to same-age students and, as a result, require talent development opportunities and differentiated teaching and learning practices to ensure their specific learning needs are met.

Students can show high potential across four domains - intellectual, social-emotional, creative and physical. At Wakehurst Public School, school staff regularly engage in professional learning to stay up to date with best practice in high potential and gifted education. Staff are considerate of the needs of high potential students when

planning their lessons and they also provide enrichment opportunities across the four domains outside the classroom. They identify students across the four domains of potential and work with our High Potential and Gifted Education (HPGE) Committee to ensure the needs of these students are met in the classroom.

Some of the enrichment opportunities offered at Wakehurst include small group workshops based on student interests, Maths Olympiad for Stage 3 students, representative sport opportunities, junior and senior dance groups, debating, band and nomination for external workshops such as GATEWAYS. Students can also create artworks to enter the Operation Art program to be displayed in the Royal Children's Hospital at Westmead through our school-based competition.



LIBRARY

The school has a well equipped library which is used by all students. The Library supports the literacy program through research skill development and a love of reading. There are inquiry terminals for students to use in their search for both recreational reading and for research. Each child is given a library bag.

LINES

In the morning, K-6 students line up in their “lines” at 9:15am under the COLA where important messages are given to them before going into the classrooms. As students are provided with important information at this time, it is essential that they arrive at school in time for ‘lines’.

OPPORTUNITY CLASS

The Department of Education provides opportunity classes (OC) for academically gifted and talented students in Years 5 and 6. Students

must compete academically with all other candidates for entry into an OC Class.

Academic merit is determined mainly by the combination of the results of the state-wide OC Placement Test in English, Mathematics and general ability, together with the school assessments of student performance in English and Mathematics.

Students entering Year 5 OC will usually be aged between 9 and 11 years on 31 January of the year they enter Year 5 and are usually in Year 4 when they apply for placement. Students must be Australian citizens or holders of a visa granting permanent residence in Australia. Parents/carers must be living in NSW at the beginning of the school year in which the student enters Year 5.

The schools sends out information regarding OC tests via the school newsletter or SchoolBytes.



Parental Involvement

PARENT & CITIZENS ASSOCIATION

The school has an active Parents and Citizens Association that meets in Week 3 and Week 8. The first meeting each term is



online via Zoom. The Week 8 meeting is held face-to-face at 7pm in the school’s staffroom. Please visit our P&C website for further information and to get involved with our P&C or volunteer your time: <https://wpspandc.com/>

PLEASE NOTE: The WPS P&C levies a contribution to assist with P&C activities.

PARENTS AS HELPERS AND EXPERTS

All volunteers are required to complete a “Working with Children Check” form (Appendix 5-Declaration for volunteers) which is available at the school office.

Parents are valued as partners in the education process in this school.

Classes at all grade levels appreciate parent help with programs. Parents with and without special expertise are always welcome to help with learning programs especially Project Based Learning.

Green Team-Parents are welcome to assist students with garden care.

Please contact your child’s class teacher if you are interested in helping.



Learning Opportunities

SEE OUR AMAZING CREATIVE ARTS PROGRAMS

DANCE ENSEMBLE

Dance Ensemble is a selective and creative group of junior and senior students from Years 2-6 are given the opportunity to express themselves through the movement of dance. The Dance Ensemble group rehearse weekly with our dance teachers, to develop a technical and advanced routine that showcases a range of genres and styles. Each year the group performs at school events and the Sydney North Dance Festival.

K-6 DANCE PROGRAM

Our students participate in a weekly dance lesson with qualified and

passionate dance teachers during Term 3. Dances are showcased for the community at the end of Term 3.

DEBATING

At Wakehurst Public School we offer students in Years 5 and 6 the opportunity to participate in the Premier's Debating Challenge. Each year, we enter two teams in the competition to represent the school. Over the past few years, Wakehurst has performed very well with all teams winning their zones and one team competing at state level. We participate in workshops with other schools at attend the Northern Sydney debating camp in Term 3.

VEGETABLE GARDEN

The Wakehurst Garden Committee works with the school to ensure all students get to be part of our wonderful garden which involves planting and harvesting their grown produce each term.

WPS BAND AND GUITAR ENSEMBLE PROGRAM

The aim of the band program is to provide musical enrichment through the playing of an instrument. Our musical ensembles strive to achieve high-performance standards and encourage the development of positive attitudes in an atmosphere of teamwork and enjoyment. The band program is open to children in Years 3 to 6, with the following bands and ensembles offered:

- 1) Training Band - Children joining band for the first time will start in Training Band, typically in year 3.
- 2) Concert Band - After 1 year in Training Band students typically graduate to Concert Band.
- 3) Guitar Ensemble - This ensemble is for students who are learning either

electric or bass guitar and wish to focus on contemporary music.

The band is a self-funded sub-committee of the Wakehurst Parents and Citizens Association and is managed by a team of parent volunteers. Mrs Dani Cosford of Syncopate Studios is our band musical director and brings a wealth of experience, quality tuition and enjoyment to the band program. Students are also expected to have private tutoring in their instrument outside of school.

Our bands and guitar ensemble have various performance opportunities throughout the year at school assemblies and events, festivals and band competitions. The groups' participation in various events provides valuable and rewarding experiences for students and families. A highlight of the year is the annual band camp where students have a great time rehearsing in groups, ensembles and bonding through games and outdoor activities.

Anyone interested in finding out more about the band or guitar ensemble can email: band@wpsbandc.com





Leadership

STUDENT REPRESENTATIVE COUNCIL

An important part of developing students respect and responsibility is the opportunity to be part of the student collaborative voice through the Student Representative Council. The SRC consists of two representatives from each class, Years 2 to 6 with class representatives being appointed at the beginning of each year.

The SRC meets regularly each term. They organise fund raising events for charities decided on by the student body and discuss issues students would like to know more about or be involved in. The SRC puts forward ideas to further improve the school.

PEDESTRIAN CROSSING SUPERVISOR

The Roads and Maritime Services (RMS) employ a crossing supervisor before and after school to assist with safety on the Glen Street crossing. Parents/carers should support the crossing supervisor by following instructions and using the crossing according to the road rules. Comments regarding this service should be directed to the RMS.

PLAYGROUNDS

Our school has several playground areas, which are closely supervised by staff. The students are able to use school equipment during breaks and staff emphasise cooperative play. Games involving physical contact (eg tackling, pushing, kicking or throwing objects at others) are not permitted. For sun safety, students must wear their school hat outside. We have a no hat play in the shade rule. Students without hats sit in the shade. All rubbish must be placed in garbage bins.

The Library is available as a playground alternative during the second half of lunch. The Lego Club is open on the Kindergarten verandah during the second half of lunch.

OUT OF SCHOOL HOURS CARE - PRIMARY OSHCARE

Out of school hours care is provided by Primary OSHCare within the school grounds. Primary OSHCare, designs programs that are fun and stimulating, helping kids reach their full potential in NSW. Care is provided from 7:00am to 8.45am and from 3:15pm to 6:00pm. Vacation care programs are also offered from 7:00am to 6:00pm. Further information can be obtained by telephoning 0427 255 966 or emailing woshc@primaryoshcare.com.au

SELECTIVE HIGH SCHOOL TESTS

Students, towards the end of Year 5, have the opportunity to apply for placement in a Selective High School. Students must compete academically with all other candidates for entry to each selective or agricultural high school. Academic merit is determined mainly by the combination of the results of the Selective High Schools' Test in Reading, Writing, Mathematics and General Ability together with the primary school assessments of students' performance in English and Mathematics. Additional information may also be provided by parents/carers or principals to support the application and will be considered at the discretion of the selection committee. Students must be Australian citizens or holders of a visa granting permanent residence in Australia.

For entry to Year 7 in any given year, the selection process will follow this timeline:

1. **October/November:** Online applications open
2. **March:** Students complete the test
3. **July:** Parents/carers are informed of outcome

More information on Selective High Schools can be obtained from: <https://education.nsw.gov.au/public-schools/selective-high-schools-andopportunity-classes/year-7>



SPORT

Kindergarten participate in a gross motor program designed to develop skills, flexibility and strength.

Years 1 and 2 participate in a whole stage sports/skills and games program. Children in Years 3-6 participate in School Sport each Friday.

The school also participates in PSSA in T-Ball, Softball, Cricket, Soccer, AFL and Netball. There are annual carnivals for swimming, athletics, and cross country. Successful participants have the opportunity to represent the school at Zone, Area and State Carnivals

Students are given the opportunity to try out for Regional Teams in cricket, netball, tennis, basketball, AFL, rugby (league and union), softball and soccer.

SWIM SCHOOL

An intensive swimming school is conducted each year, for all students in Year 2.

SPECIAL RELIGIOUS EDUCATION / SPECIAL EDUCATION IN ETHICS

Special Religious Education (SRE) involves authorised representatives of approved religious persuasions providing instruction to students within school time. Parents/carers nominate their child's religious denomination on enrolment and they may withdraw them or change Scripture classes by notifying the office in writing. Students also have the option of attending Special Education in Ethics (SEE) classes as an alternative to NonScripture.

Each Wednesday visiting volunteers provide religious instruction to classes of Catholic and Protestant students as well as Ethics classes. There is also a non-scripture option for children of parents who nominated for no scripture.

VISITOR CHECK IN

All visitors must sign in and out of the school at the office. This includes in-class helpers and canteen volunteers.

VISITING PERFORMANCES

From time to time performers are invited to present shows at our school. Only those shows which are considered to be of educational merit and present value for money are invited.





Technology

ICT INTEGRATION

All classrooms are equipped with interactive technological aids. ICT tools are integrated into general classroom activities. All K-2 classes have a set of iPads to support student learning.

BRING YOUR OWN DEVICE (BYOD)

A BYOD program operates in Years 4, 5 & 6. Parents can choose to purchase or rent a Chromebook device.

CODING

Activities like Code Studio and Bee Bots teach students computational thinking, which is the idea that it's OK to make mistakes. You just need to write a

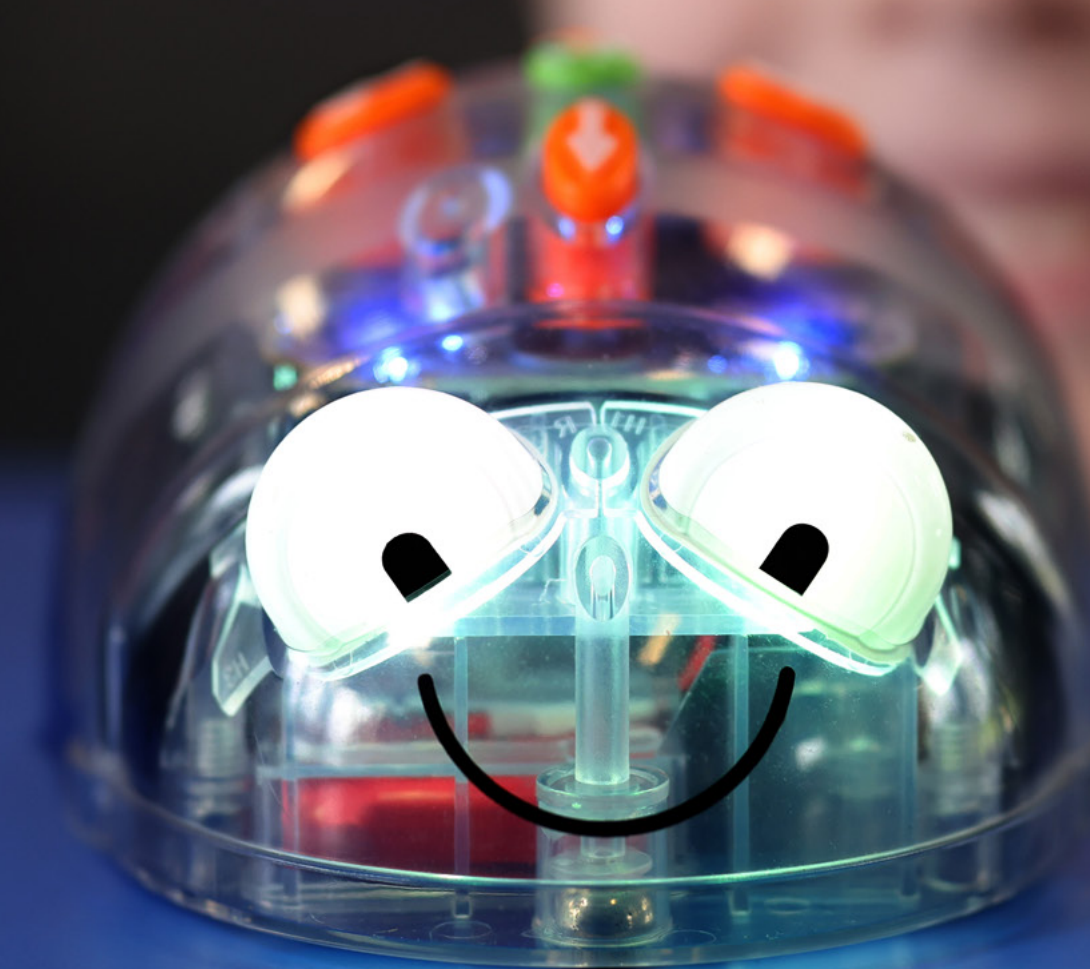
different code or script for the computer to follow.

STEM

Science, Technology, Engineering, Arts and Mathematics. The department has invested in a series of STEM share kits that include robotics, 3D printers, virtual reality and film making.

TECHNOLOGY UPGRADE

A WiFi upgrade was completed at Wakehurst Public School in 2023 which has enhanced the connectivity for all IT devices in the school. Student access to internet using iPads and Chromebooks through our BYOD program benefited greatly from this upgrade.





Transport

STUDENT SAFETY IS KEY

TRAVEL TO AND FROM SCHOOL

The safety and the behaviour of children as they travel to and from school is of major importance to the school even though children may be outside the direct supervision of their teachers. All children whether they walk, ride a bike or travel by bus, are expected to behave in a safe manner that reflects positively on the school. In the interests of their own safety it is important that children proceed directly to their destination, without loitering, both before and after school.

All students riding bikes or scooters to school are required to wear a helmet to and from school. Bikes and scooters can be walked into school and parked outside the back windows of the library.

ROAD SAFETY

Parents/carers should constantly reinforce and model road safety with their child. Parents and carers are reminded to adhere to all

parking signs outside the school.

Please support our school community to ensure the safety of our students by demonstrating the correct use of the road rules. Specifically, parents/ carers are requested to ensure that their children know how to follow road rules including always crossing at the pedestrian crossing.

BUSES

A school bus is run by CDC, for current school route services visit www.cdcbus.com.au

Morning route 151 – 8.10am from Belrose to Wakehurst Public School

Afternoon route 227 – 3.43pm from Wakehurst Public School to Belrose, Frenchs Forest and Terrey Hills.

Students must have a valid Opal card and must tap on and off every trip.

Further details or to apply for an Opal card please visit www.transportnsw.info





Uniform

THE SCHOOL UNIFORM IS WORN WITH PRIDE

The school community has elected to make the wearing of a school uniform compulsory. Whilst outdoors, summer or winter, both boys and girls are required to wear the school uniform hat. Uniforms need to be purchased through the Uniform shop. Students with long hair are asked to use neutral coloured elastics such as black, white, blue, yellow or skin colour and may use yellow or blue ribbons, hair ties or clips in their hair. Students may wear hair accessories the colour of their house sport when at sporting events. Extras: Raincoat or umbrellas for Years 3-6. K-2 students are discouraged from using umbrellas for safety reasons. Raincoats are preferred. Earrings: Studs or sleepers only.

UNIFORM SHOP

Through the P&C Committee the school operates a Uniform Shop which carries the complete range of new and second hand uniforms including sports uniforms and winter fleecy tracksuits. Also available are school backpacks, library bags, hats and socks.

The uniform shop is currently open on Monday afternoon 3-4pm and Friday morning 8.45-9.45am

The Uniform shop can be contracted by email – uniform@wpspandc.com

Uniforms can be ordered online – <https://wpspandc.com/collections/uniform-shop>

All uniforms ordered online will be delivered to your child's classroom.

School uniform items are listed on the following page. We also have a green school bag available.

NO HAT PLAY IN THE SHADE RULE

In line with the Cancer Council policy the school has a no hat play in shade rule.



Summer Uniform

WAKEHURST PUBLIC SCHOOL



Girls

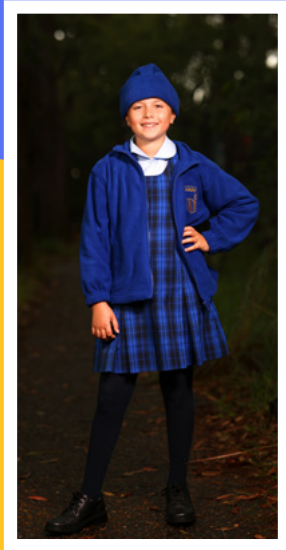
- Blue checked summer dress, or
- Sky blue summer blouse with WPS logo
- Blue checked summer skirt
- Bomber jacket
- White short socks (socks must be visible)
- Black school shoes

Boys

- Sky blue short-sleeved collared shirt with WPS logo
- Light grey shorts
- Bomber jacket
- Grey socks
- Black school shoes

Winter Uniform

WAKEHURST PUBLIC SCHOOL



Sports Uniform

WAKEHURST PUBLIC SCHOOL



Girls

- Blue tunic with sky blue Peter Pan long sleeved blouse with tights
- Navy blue pants with sky blue Peter Pan long sleeved with WPS logo
- Bomber jacket, V neck jumper or dry & cosy parka
- White socks or navy tights
- Black school shoes

Boys

- Long sleeved sky blue skirt with WPS logo
- Long grey trousers bomber jacket, V neck jumper or dry & cosy parka
- Grey socks
- Black school shoes

Girls

- Royal blue sport shorts or skort
- Short sleeved sports shirt in house colour
- Sports shoes and white socks
- PSSA shirt and PSSA socks - PSSA team members only

Boys

- Royal blue sport shorts
- Short sleeved sports shirt in house colour
- Sports shoes and white socks
- PSSA shirt and PSSA socks - PSSA team members only

A background image showing a group of students in blue and white checkered school uniforms. In the foreground, a young girl with blonde hair tied in a ponytail with a blue scrunchie is looking to the left. Behind her, other students are visible, slightly out of focus.

WAKEHURST PUBLIC SCHOOL

School Song

We sing the school and the National Anthem at all assemblies.

*We are the students of Wakehurst school,
Our values help us thrive.
Friendship, loyalty and learning,
We're creative and inspired.*

*We are the students of Wakehurst school,
We're embracing every day.
No matter the challenges ahead
We will always find a way.*

*We are Wise (clap, clap)
We are Free (clap, clap)
We're the best that we can be.
We are Strong (clap, clap)
We Rule (clap, clap)
We are Wakehurst Public School.*

*We are Wise (clap, clap)
We are Free (clap, clap)
We're the best that we can be.
We are Strong (clap, clap)
We Rule (clap, clap)
We are Wakehurst,
We are Wakehurst Public School.*

NOTE:

In 2023 our school and P&C worked in conjunction with Digby music to create a new and inspirational school song to reflect our school values. We sing our school song and the National Anthem with pride at all school assemblies.